



2nd Annual JONNY HERRGOTT MEMORIAL Slo-Pitch Tournament

Friday, June 26 – Saturday, June 27, 2026

Captains Package

Hi Captains!

Welcome to the **2nd Annual JH Memorial Slo-Pitch Tournament!**

In this package, you'll find everything you need to get your team ready for a great weekend:

Included in This Package:

- Tournament Schedule
- Map of Diamonds & Services
- Tournament Rules
- Info on the Beer Garden, BBQ, Snack Stand, Live Music, and 50-50 draw

This is a Cash-Preferred Event

While we will have a Square reader available for debit/credit card purchases, a **service fee of 2.5% + \$0.15** will apply. **Square service fee: 2.5% + \$0.15** per transaction

→ For example: A \$20 purchase will include a **\$0.65 fee = \$20.65**

Bringing **cash** helps keep the lines short and the process smooth — thank you!

Food Truck Friday Night!

Come hungry this Friday and treat yourself to Fo'Cheezy! It's the perfect way to kick off the weekend! They will be on site starting at 5pm.

Volunteers Are Here to Help!

This tournament is **entirely volunteer-run**. If you have **questions or concerns**, please find someone wearing a **NEON GREEN t-shirt** — they're here to help!

⊘ **No Trunk Bars Allowed**

Teams are **not permitted** to bring or serve alcohol from vehicles or coolers. Any team caught with alcohol **outside of the designated beer garden** will be **disqualified** from the tournament. Help us keep this a safe and respectful event for all.

We're looking forward to a fantastic weekend of **ball, camaraderie, and good vibes. Good luck to all teams — play hard and have fun!**

Sincerely,

The JH Memorial Planning Team

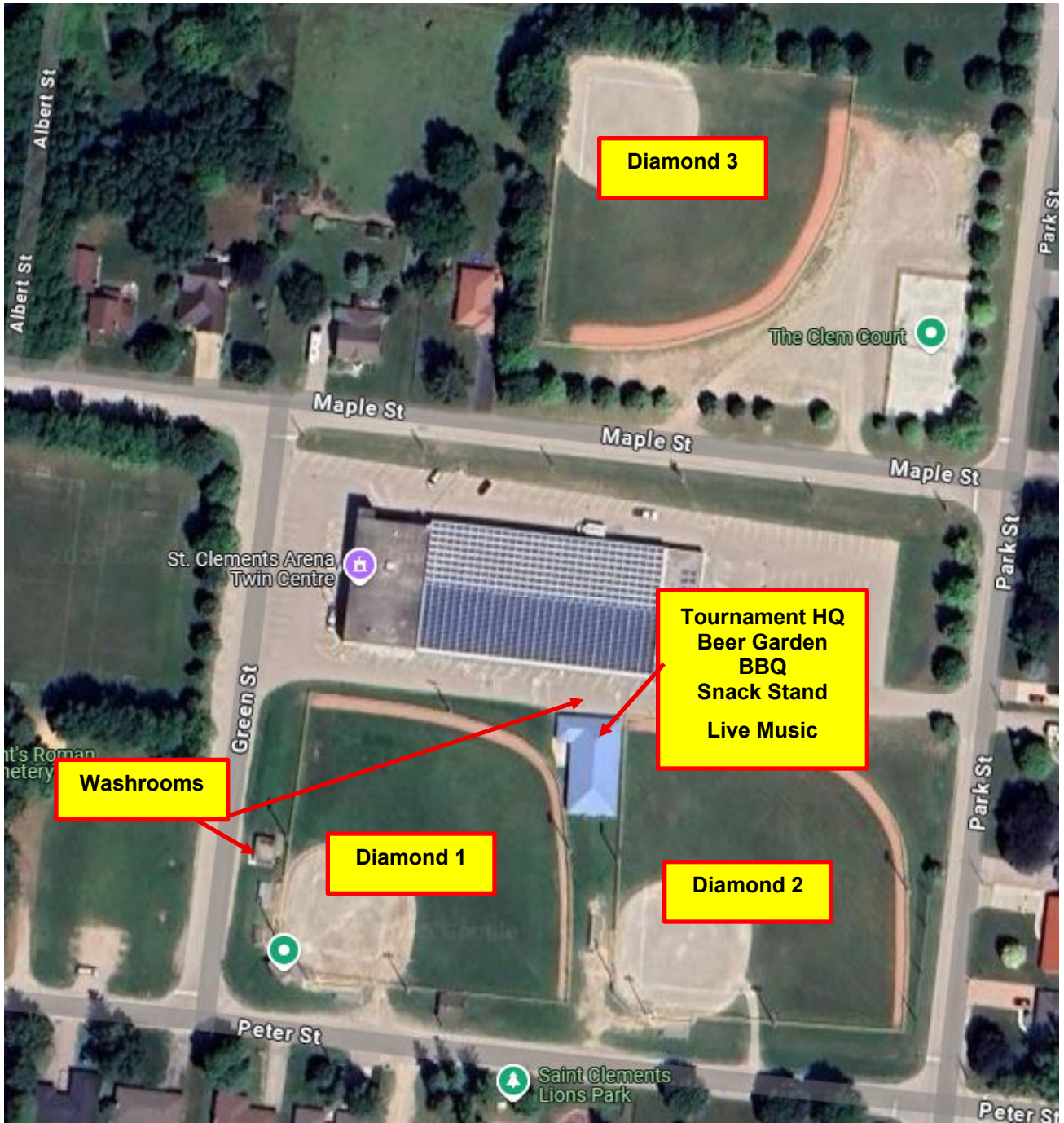
Tournament Schedule

Pool 1 - Co-ED A		Pool 2 - Co-ED B		Pool 3 - Men's A		Pool 4 - Men's B	
Team A	Angels	Team E	Expos Legacy	Team L	McGlovin	Team Q	Titans
Team B	Crue 2.0	Team F	Wicked Chickens	Team M	Martin's Customizing	Team R	Hammer Time Renovations
Team C	Expos Legacy	Team G	Rural Roots	Team N	Straight Heat	Team S	St. Clement's Fire Dept.
Team D	DCD Diamonds	Team H	Wated Potential	Team O	Outlaws	Team T	Philibusters

Friday Night	Time	Diamond 1	Diamond 2	Diamond 3
Round Robin	6:00 p.m.	Crue 2.0 vs DCD Diamonds	Martin's Customizing vs Outlaws	Wicked Chickens vs Wasted Potential
	7:15 p.m.	McGlovin vs Straight Heat	Titans vs Hammer Time	St. Clement's Fire Dept vs Philibusters
	8:30 p.m.	Expos Legacy vs Wicked Chickens	Angels vs Expos Army	Wasted Potential vs Rural Roots

Saturday	Time	Diamond 1	Diamond 2	Diamond 3
Round Robin	9:00 a.m.	Straight Heat vs Outlaws	Philibusters vs Titans	McGlovin vs Martin's Customizing
	10:15 a.m.	Angels vs DCD Diamonds	Rural Roots vs Expos Legacy	Crue 2.0 vs Expos Army
	11:30 a.m.	Outlaws vs McGlovin	Hammer Time vs St. Clement's Fire Dept	Martin's Customizing vs Straight Heat
	1:00 p.m.	Wicked Chickens vs Rural Roots	Expos Army vs. DCD Diamonds	Expos Legacy vs Wasted Potential
	2:15 p.m.	Angels vs Crue 2.0	St. Clement's Fire Dept vs Titans	Hammer Time vs Philibusters
Final Games	3:45 p.m.	Pool 2 #2 vs Pool 1 #1	Pool 1 #2 vs Pool 2 #1	Pool 1 #4 vs Pool 2 #3
	5:00 p.m.	Pool 3 #2 vs Pool 4 #1	Pool 4 #2 vs Pool 3 #1	Pool 2 #4 vs Pool 1 #3
	6:15 p.m.	Co-ed Final	Pool 3 #4 vs Pool 4 #3	Pool 4 #4 vs Pool 3 #3
	7:30 p.m.	Mens Final		

Map



Jonny Herrgott Memorial Tournament - Slo-Pitch Rules

Umpiring

- Umpires will be supplied for all games
 - The umpire's decision is final – **No protests.**
-

Game Format & Timing

- All games are 7 innings or 1 hour and 15 minutes.
 - No game can start more than 15 minutes ahead of the scheduled time.
 - No inning is to start after the 1 hour mark from the first pitch.
 - All games will start immediately upon the completion of the preceding game or at your scheduled start time.
 - Coin toss determines the home team.
 - The winning team submits the score to HQ.
 - No infield practice prior to games.
-

Scoring & Mercy Rules

- Mercy rule: 6 runs per inning (last inning open).
 - Mercy rule: 11 runs after 5 innings (last half of 5th inning not played if the home team is winning).
 - Home run rule: match +1. If a batter hits one over the fence and the team is already +1, the batter is out
-

Gameplay Rules (General)

- 60' base paths for all divisions. 50' pitcher's mound for all divisions.
 - Arc of pitch minimum 6', maximum 12' (general rule). No maximum for men's division.
 - Any foul tip caught is an out.
 - Third strike foul is an out. Does not have to leave the playing field.
 - Batter's foot is not allowed to touch the plate during the swing or they will be called out.
 - Batters must remain in the batter's box when hitting the ball (umpire's discretion) or will be called out.
 - Infield fly rule is in effect: Any fly ball hit within the infield with fewer than 2 outs and runners on at least 1st and 2nd will result in the batter being called out. Note: runners are not forced to advance.
 - Lead off rule - Runners foot cannot leave the base until contact has been made with the ball. If caught leaving early or losing contact with the base on a swing and miss, the runner is out.
-

Team & Player Eligibility

- Players must be 16 years of age to play.
- Teams must have 9 players on the field to start and finish games.

- Teams have 10 minutes from the scheduled start time to field 9 players or forfeit.
 - No player may play for more than one team in the Men's division.
-

🧑‍🤝‍🧑 Co-Ed Division Specific Rules

- Defensively, teams must have a minimum of 4 females on the field.
 - Offensively, teams must alternate female and male batters.
 - If a male batter receives base on balls, the following female batter automatically receives base on balls (if desired).
 - No sliding at home plate – 20' safety line in effect.
-

🔄 Tie-Breaking & Standings

- All ties must be broken – in extra innings, the last out of the previous inning starts at second base, and we start with one out.
 - Ties in standings decided as follows:
 - 2 teams tied: head-to-head record.
 - 3 teams tied:
 - Run differential +/- (maximum 11 runs per game)
 - Most runs scored
 - Least runs allowed
-





🏃 Courtesy & Injury Substitutions

- Three courtesy runners allowed per game (on base or from home plate). The last out must be used. For co-ed, the injury runner must be the last out of the same sex.
 - Injured players may have runners for the duration of the game, at discretion, from the screen.
-

🚫 Conduct & Safety

- **No trunk bars.**
- Consumption of alcohol is permitted only within the designated licensed area – anyone caught outside of this will be disqualified from the tournament.

JH Memorial Slo-Pitch Tournament Amenities

	<i>Friday</i>	<i>Saturday</i>
 Beer Garden	Drinks: \$5 each Selection of beers and coolers <i>Serving from 5 - 11pm</i>	Drinks: \$5 each Selection of beers and coolers <i>Serving from 11am - 11pm</i>
 Food	Fo'Cheezy Food Truck See menu here . <i>Serving from 5 - 9pm</i>	BBQ: Hosted by the Paradise and District Lions Club Menu: <ul style="list-style-type: none"> • Hot Dog – \$2 • Hamburger – \$5 • Sausage – \$5 <i>Serving from 11am - 8pm</i>
 Live Music All local artists!	Sticky <i>Playing from 7 - 10pm</i>	Scott Carere <i>Playing from 3 - 5pm</i> Christian Economedies <i>Playing from 7 - 9pm</i>
 Snack Stand <i>Hosted by Local Youth!</i>	Snacks & Drinks: <ul style="list-style-type: none"> • Chips – \$1 • Freezy – \$1 • Sour Key – \$0.25 • Pop – \$1 • Water – \$1 <i>Serving from 5 - 11pm</i>	Snacks & Drinks: <ul style="list-style-type: none"> • Chips – \$1 • Freezy – \$1 • Sour Key – \$0.25 • Pop – \$1 • Water – \$1 <i>Serving from 9am - 11pm</i>
50-50 Draw	Tickets for sale.	Tickets for sale. Draw after the men's final game.

All proceeds support recreation initiatives in St. Clements!